

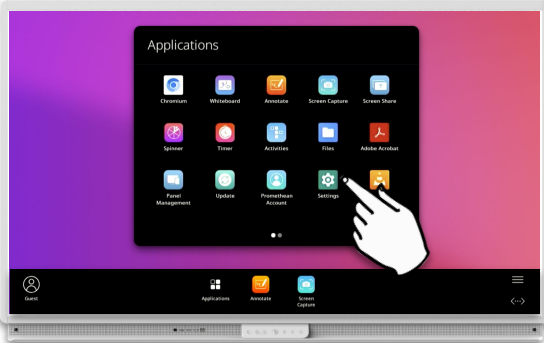
Change HDMI Compatibility

Learn how to switch your ActivPanel between HDMI 1.4 or 2.0.



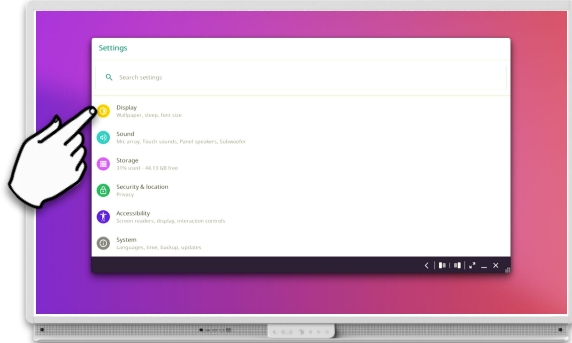
If you encounter HDMI input issues with your ActivPanel (no signal etc.) Changing the HDMI compatibility will often remedy such behavior.

1



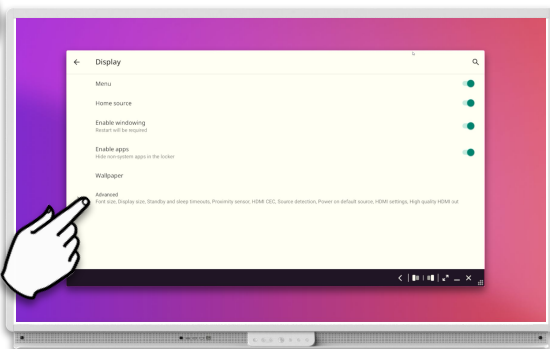
Open **Menu, Applications** and select **Settings**.

2



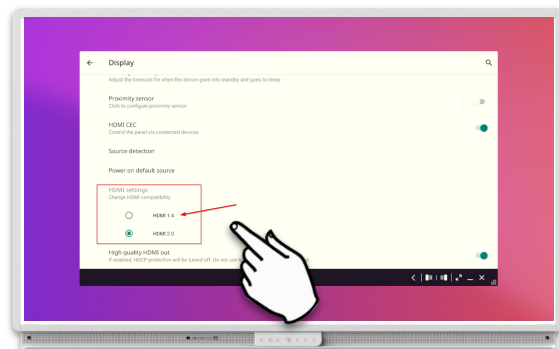
Select **Display**.

3



Select **Advanced**.

4



Scroll down and select **HDMI 1.4 or 2.0**.

More tips and tricks can be found at:
<https://www.learnpromethean.eu/>