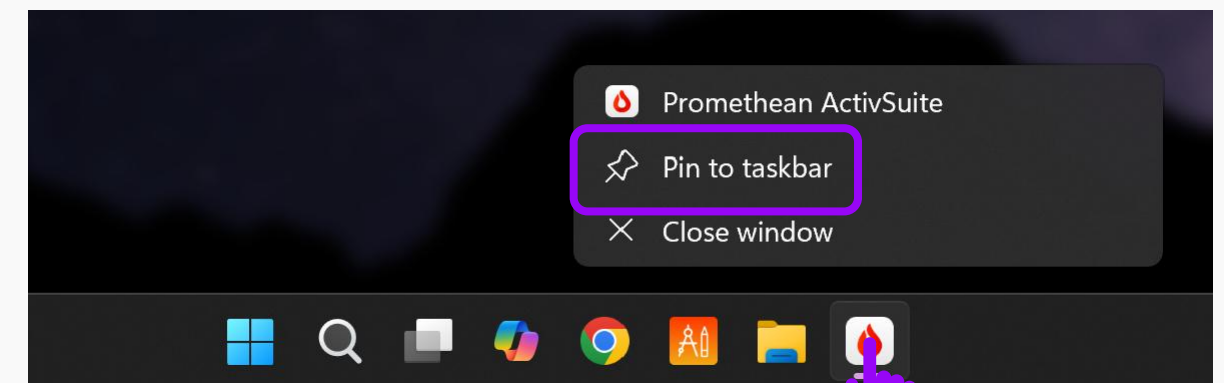
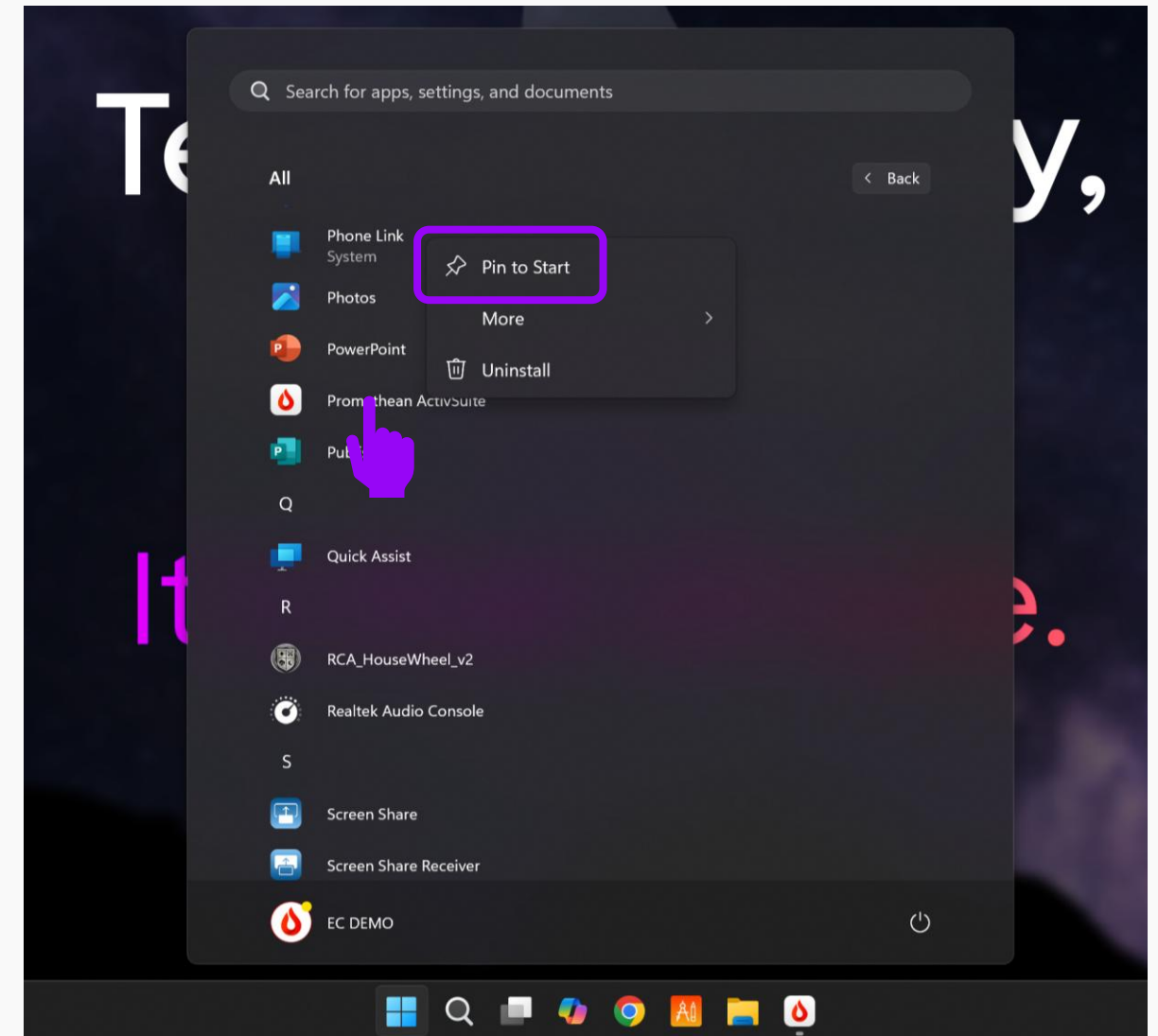
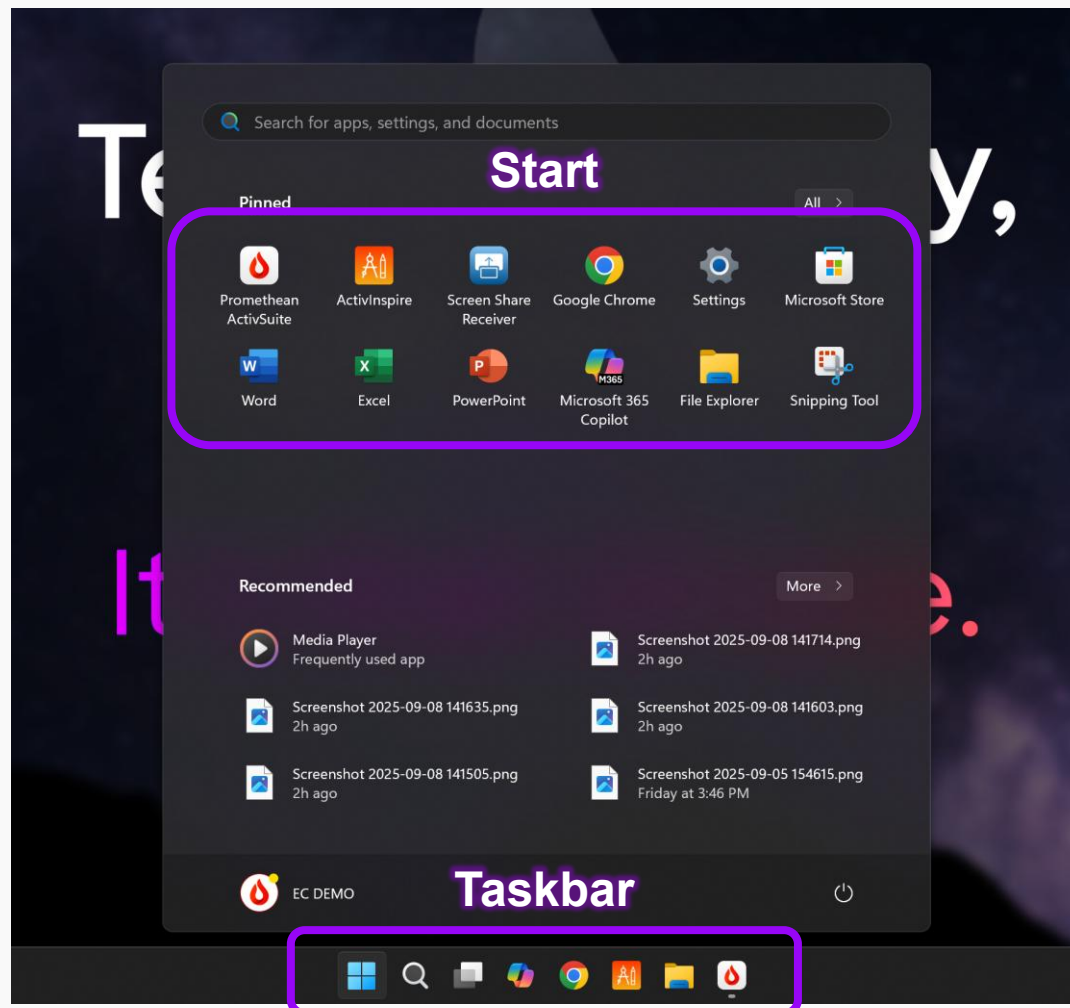




Prometheus OPS-M Settings Suggestions

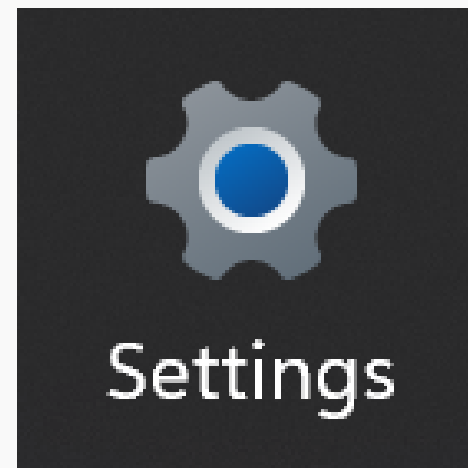
Pinning Apps

Pin apps to Start or the Taskbar by pressing and holding on the app. Select **Pin to Start** or **Pin to taskbar**.



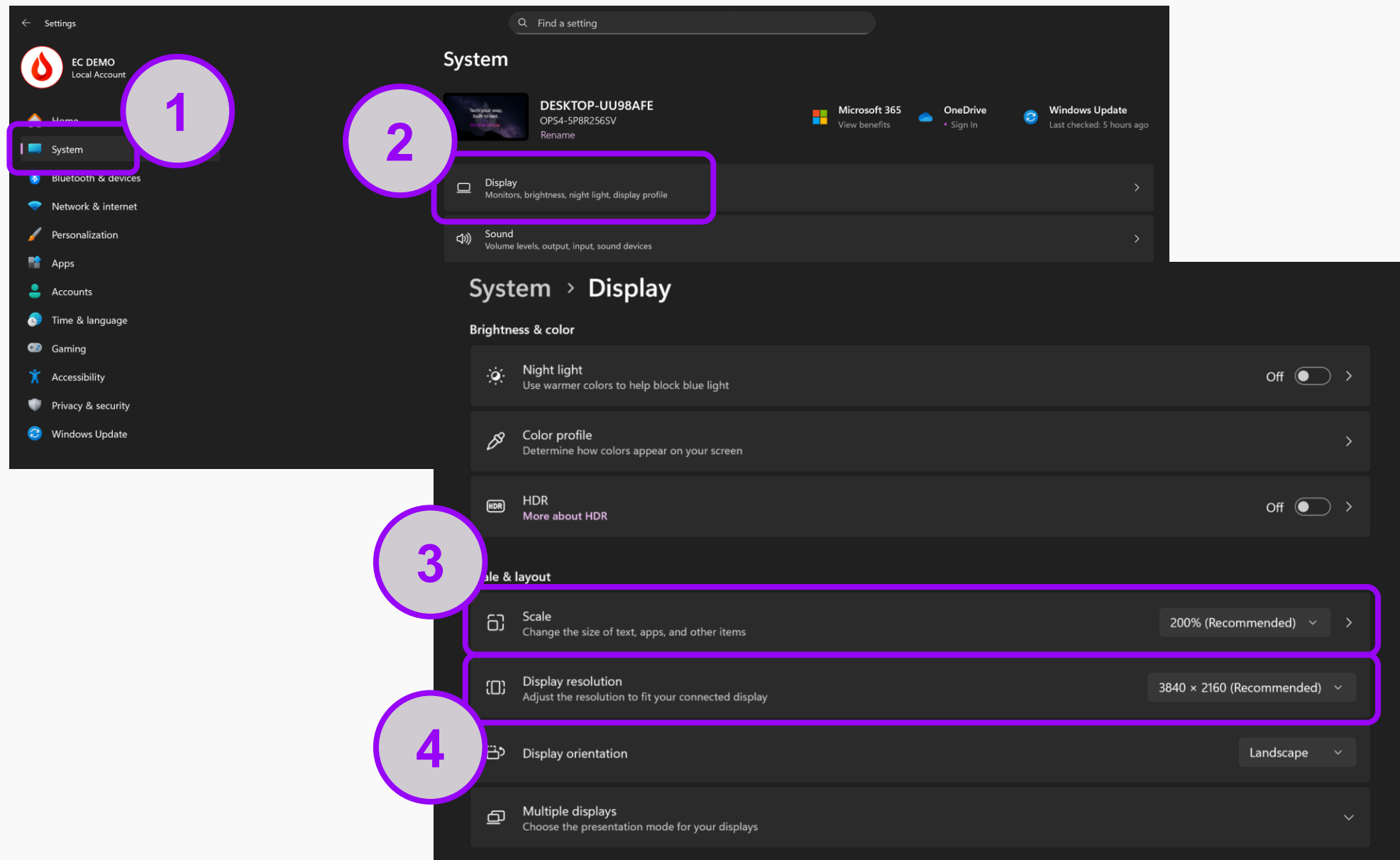
Settings

The following slides will guide you through Prometheus's settings suggestions on the Windows OPS-M module within the Settings app.



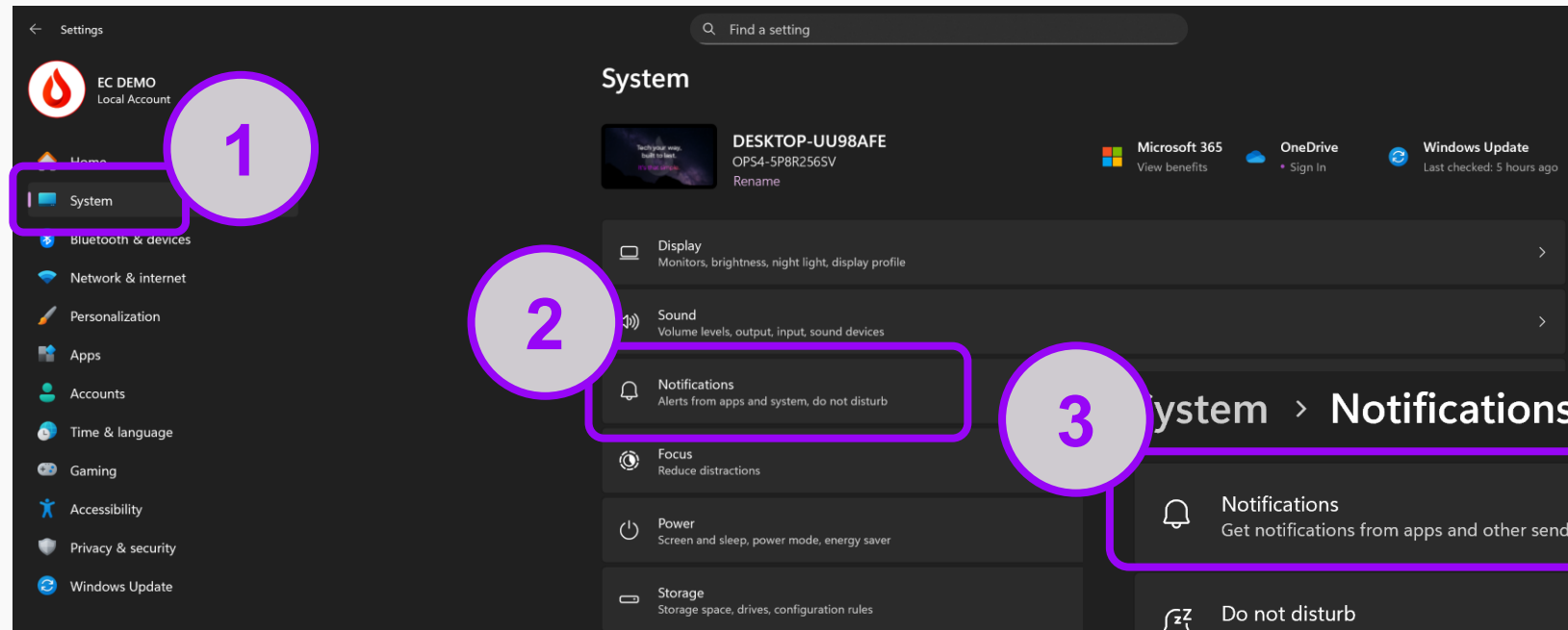
You may or may not have the ability to change these settings based on your district's permissions.

OPS-M Display Settings



1. System
2. Display
3. Scale = 200%
(Recommended)
4. Display Resolution =
3840 x 2160
(Recommended)

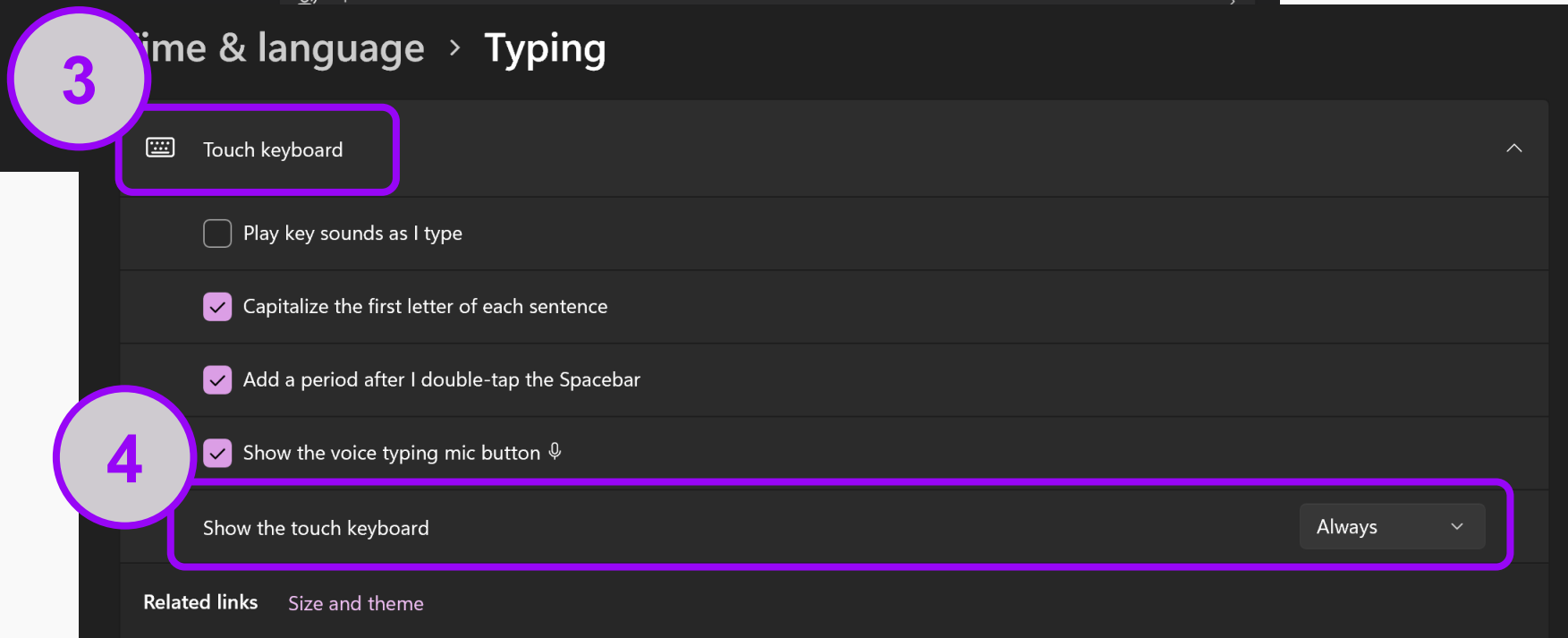
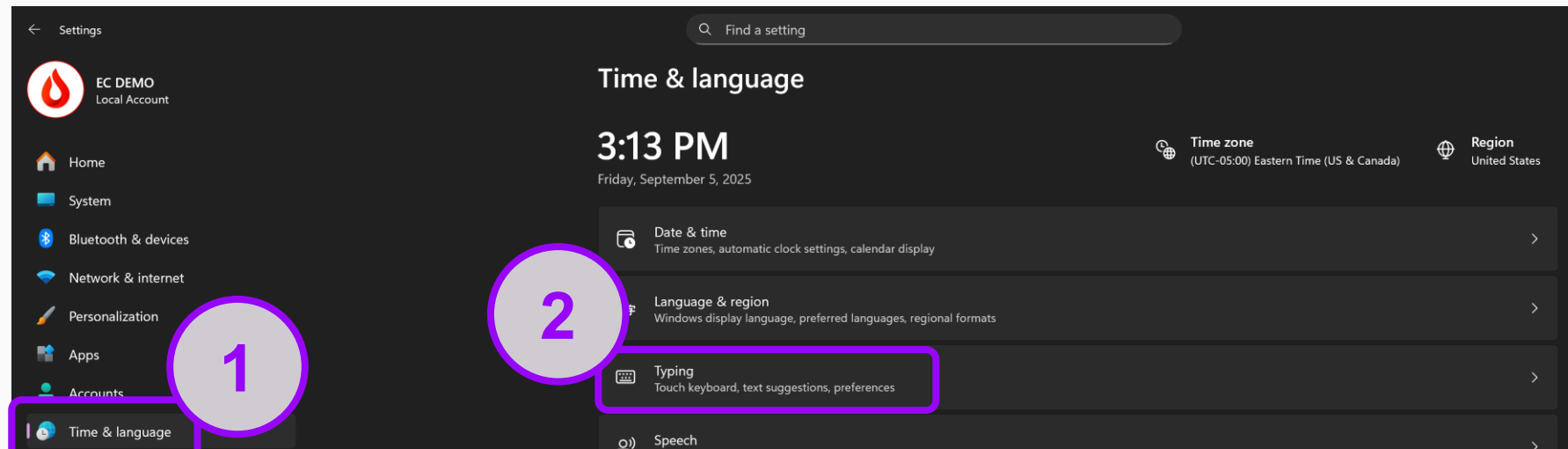
System Notifications



1. System
2. Notifications
3. Toggle Notifications to Off

Eliminate potential interruptions in the classroom.

Touch Keyboard



1. Time & language
2. Typing
3. Touch keyboard
4. Show the touch keyboard
= Always

This will initiate the keyboard when you tap on an area that requires typing.

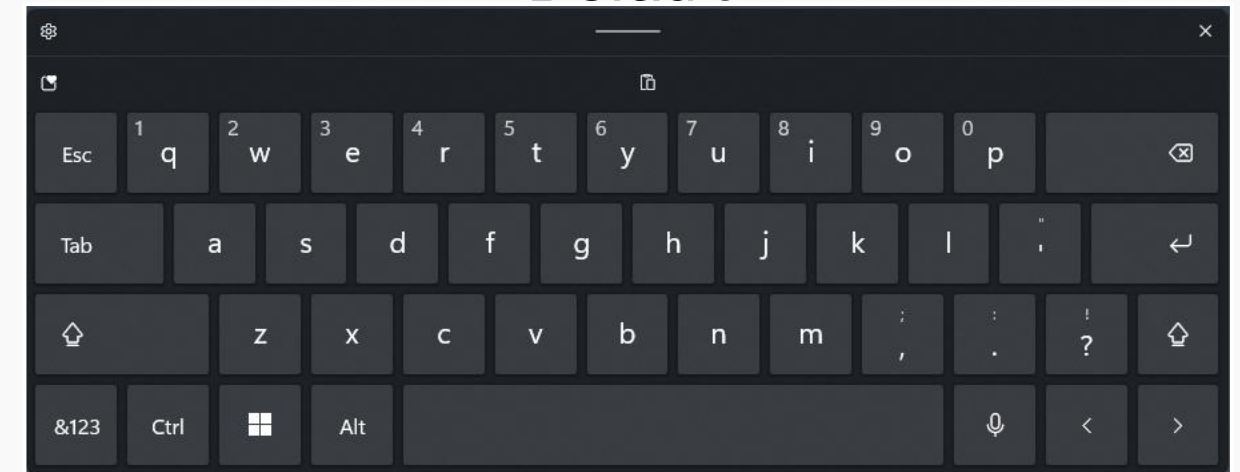
Keyboard Settings

Use the Gear icon in the upper left corner of your keyboard to change the Keyboard layout.

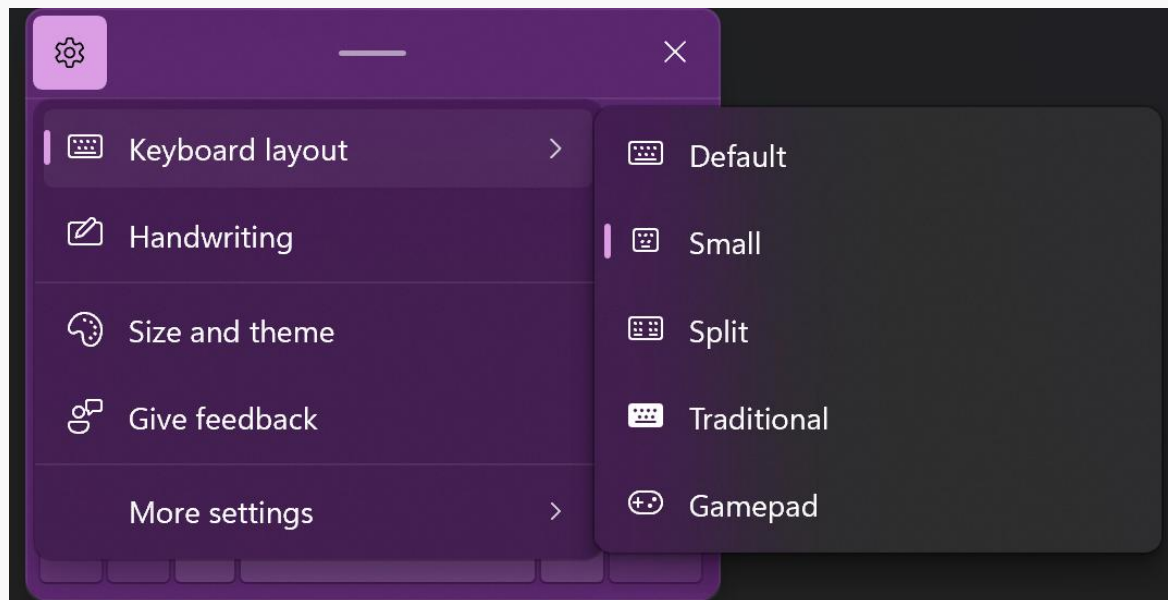
Small



Default



Traditional



Personalization Colors

The image shows a sequence of four steps to change Windows colors. Step 1: The 'Personalization' app is selected in the left-hand navigation pane. Step 2: The 'Colors' option is selected in the main Personalization pane. Step 3: The 'Choose your mode' section is highlighted, showing the current mode (Light). Step 4: The mode dropdown menu is open, showing 'Light', 'Dark', and 'Custom' options. A callout bubble points to the 'Accent color' section, which contains a 'Recent colors' row and a 'Windows colors' grid.

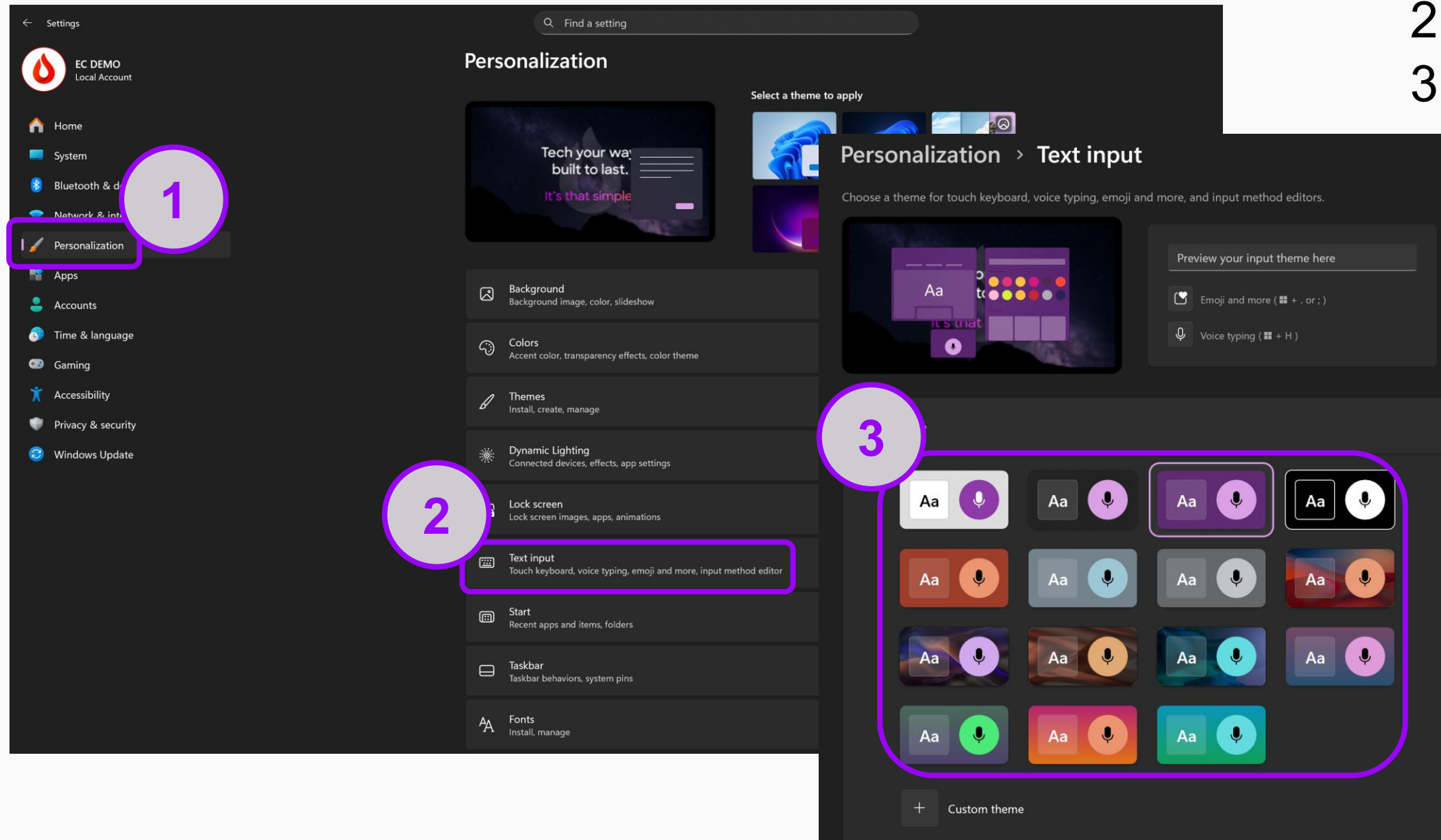
1. Personalization
2. Colors
3. Choose your mode
4. Light, Dark, or Custom

Change your accent color too if you like!

Personalization

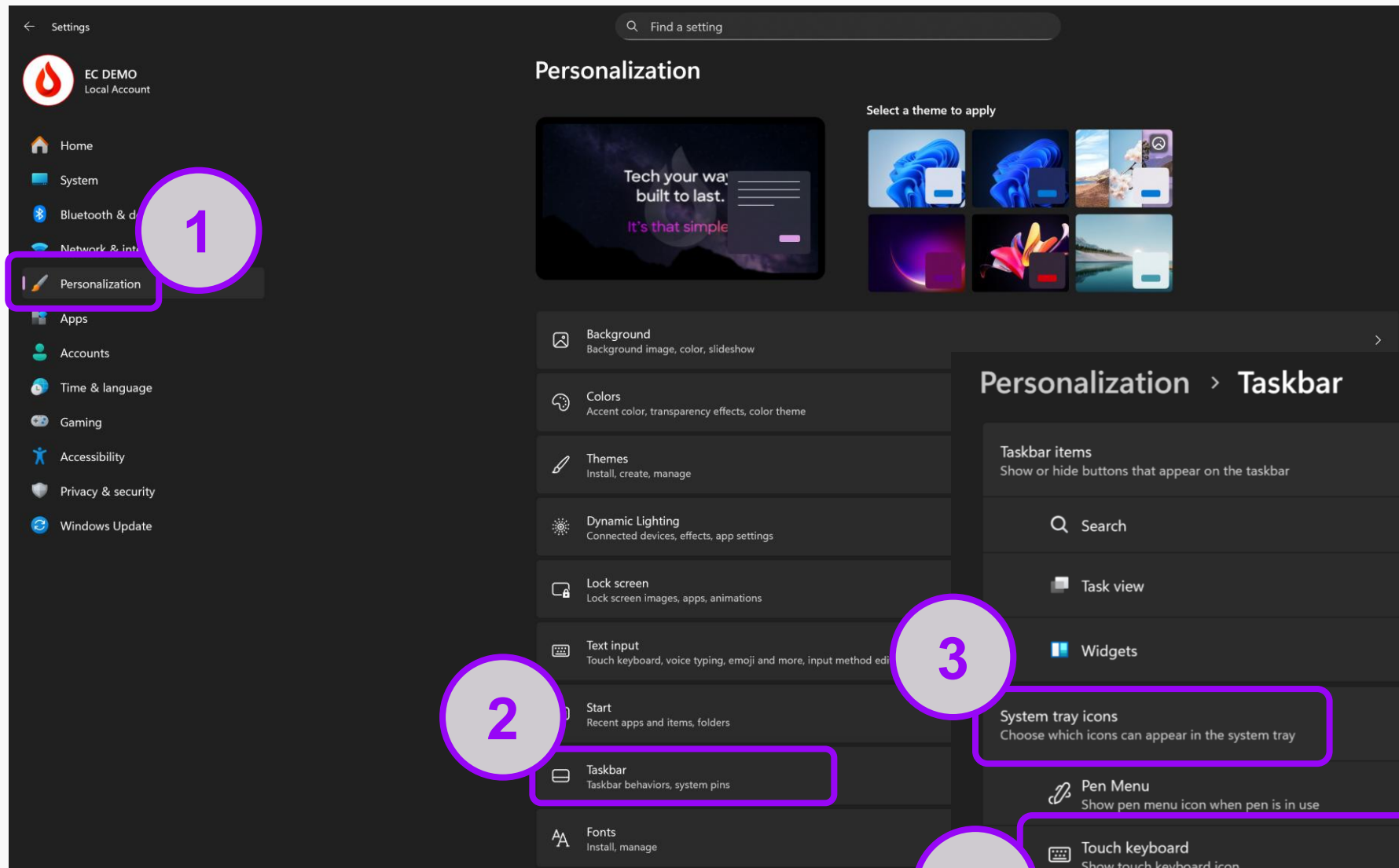
Text input

1. Personalization
2. Text input
3. Select a theme for your keyboard



Give your keyboard some personality with a theme!

Personalization Taskbar



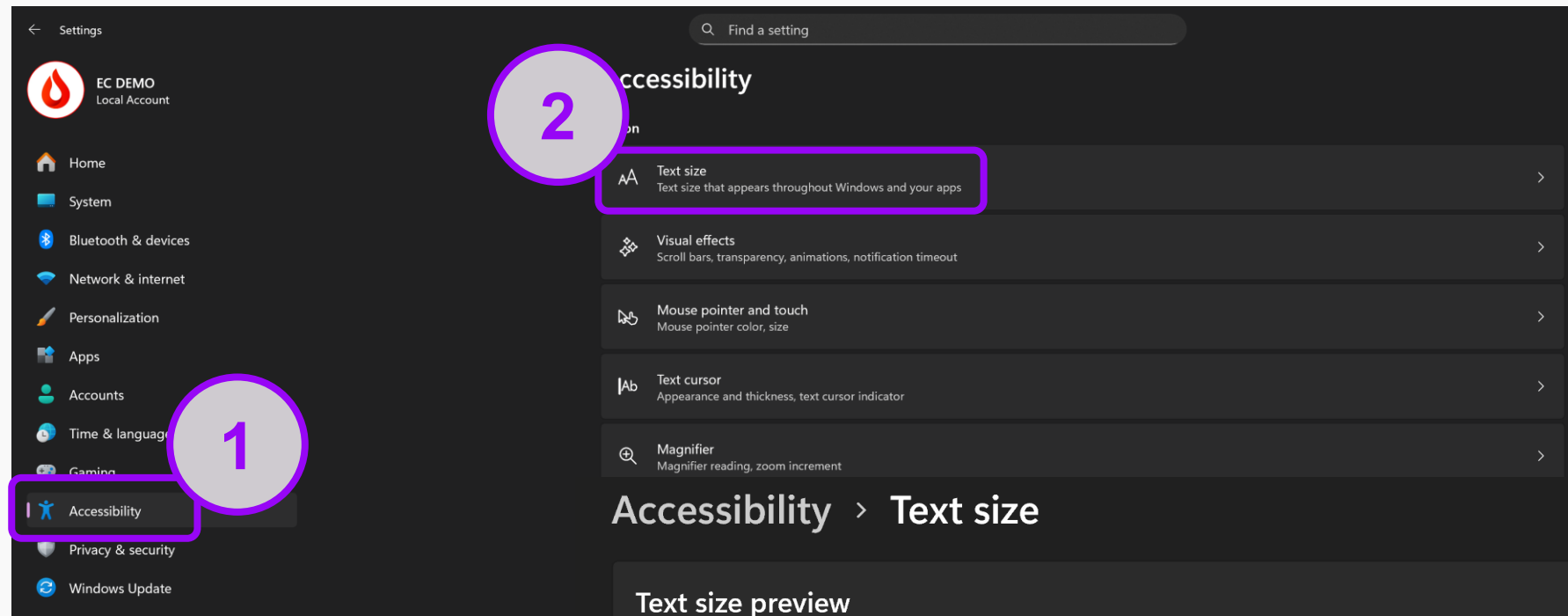
1. Personalization
2. Taskbar
3. System tray icons
4. Touch keyboard = Always

Adds a keyboard icon that always shows in your taskbar.

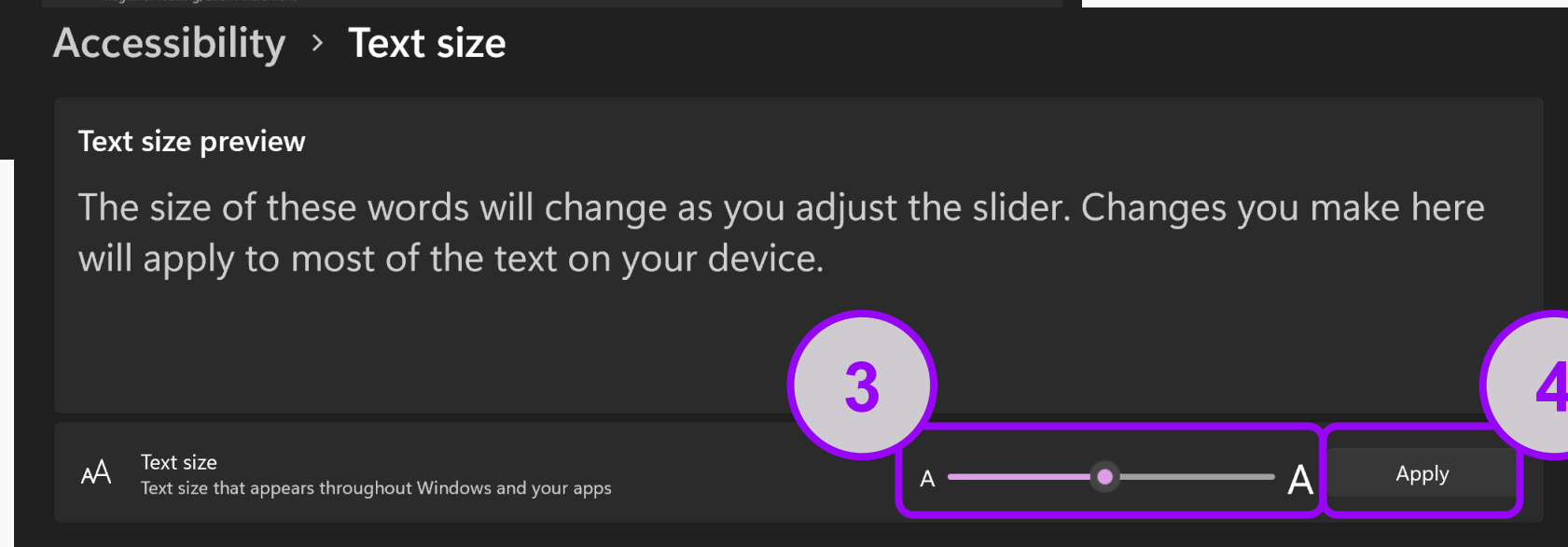


Accessibility

Text size

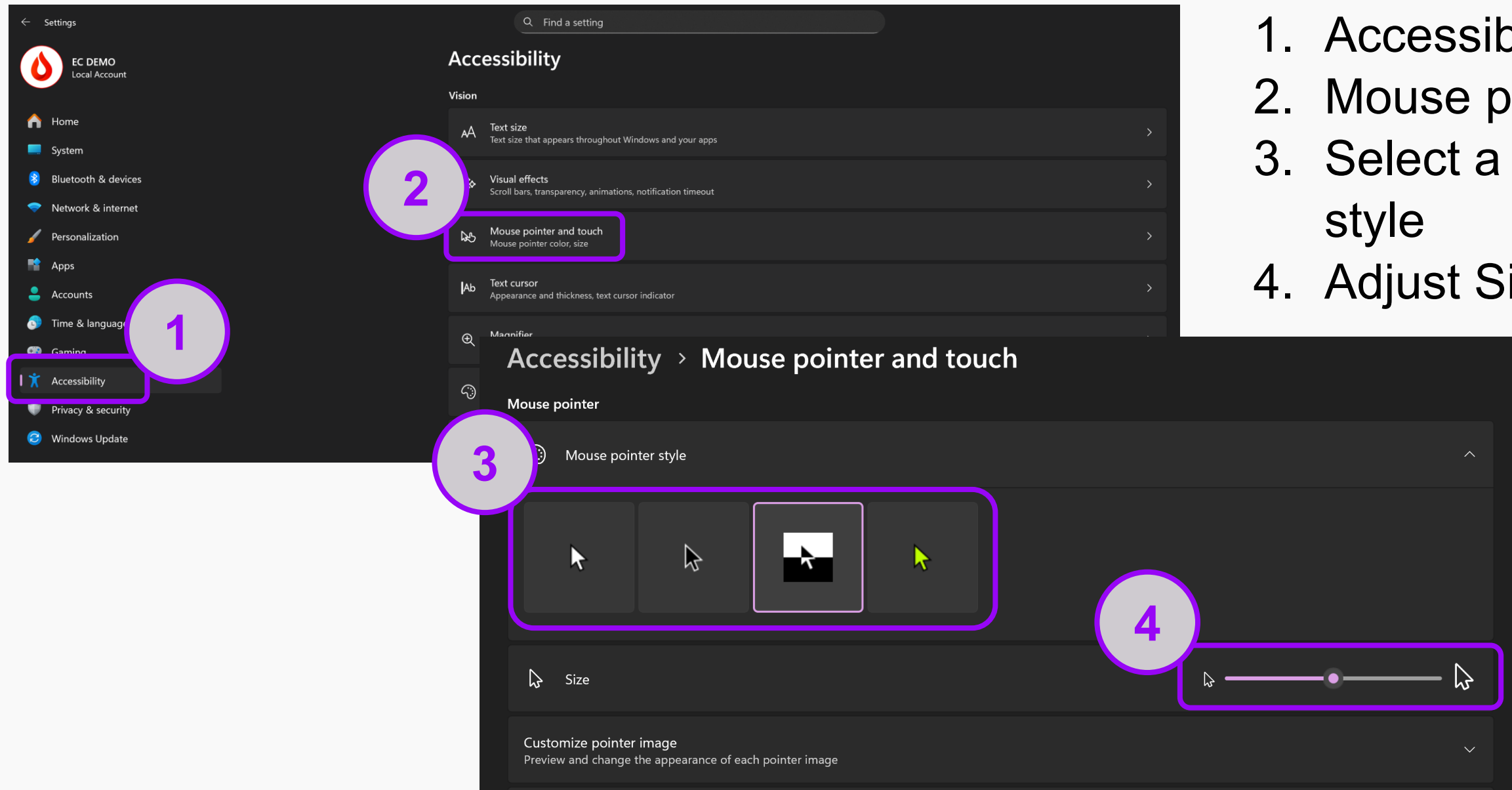


1. Accessibility
2. Text size
3. Adjust the text size
4. Apply



Accessibility

Mouse pointer and touch



1. Accessibility
2. Mouse pointer and touch
3. Select a Mouse pointer style
4. Adjust Size

Accessibility

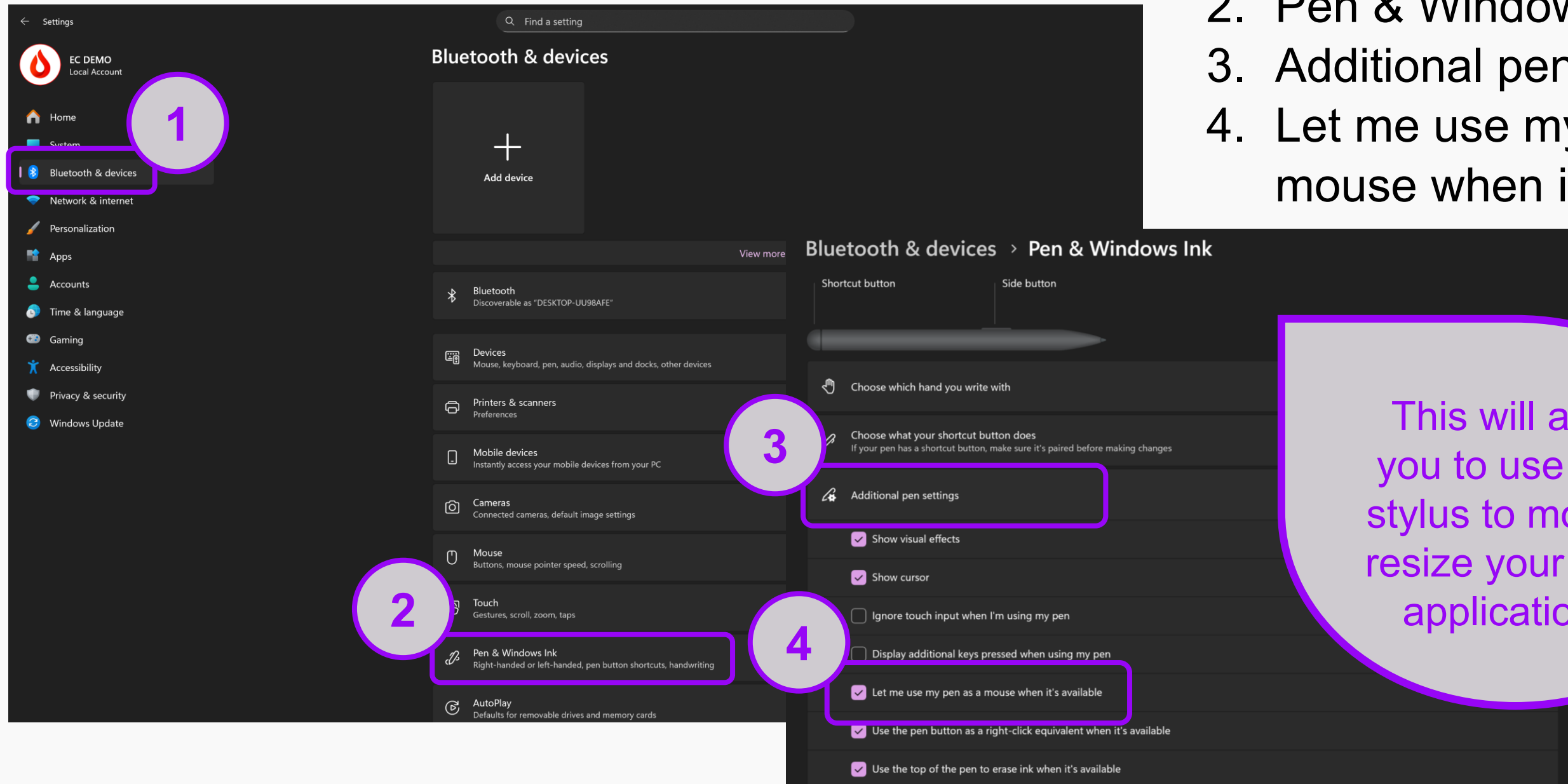
Captions

1. Accessibility
2. Captions
3. Toggle Live captions to On to set up live captions

The image shows a Windows Settings application window. The left sidebar contains various settings categories, with 'Accessibility' highlighted and circled with a purple circle containing the number '1'. The main content area is titled 'Accessibility' and lists several categories: Vision, Hearing, and Interaction. The 'Captions' option under the Interaction category is highlighted with a purple circle containing the number '2'. A secondary window titled 'Accessibility > Captions' is overlaid on the bottom right, showing the 'Live captions' toggle switch set to 'Off', which is circled with a purple circle containing the number '3'. The 'Live captions' section includes instructions on how to turn it on and a privacy notice.

Stylus/Pen Setting

1. Bluetooth & devices
2. Pen & Windows Ink
3. Additional pen settings
4. Let me use my pen as a mouse when it's available



This will allow you to use your stylus to move & resize your open applications.