

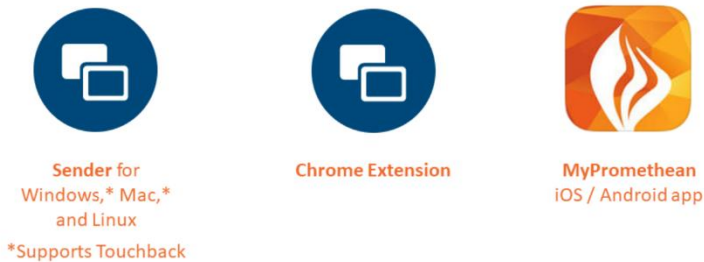
How to Connect Devices Using the Promethean Screen Share App on Your ActivPanel Nickel

The Promethean Screen Share app allows you to quickly connect and mirror student devices and lends itself perfectly to classroom collaboration and student-driven learning.

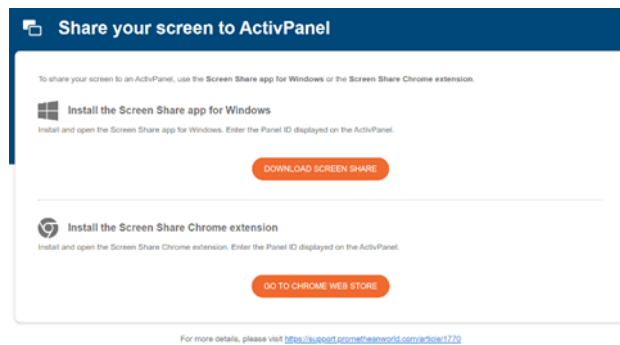
To begin, please be sure you are using an Elements Series ActivPanel and are running firmware version 3.2 or higher. To update your ActivPanel Titanium's firmware, please visit

support.prometheanworld.com/article/1742/.

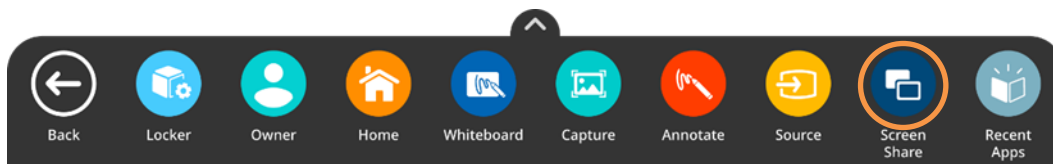
There are three types of devices you may use to connect.



To download the sender for your device, visit share.mypromethean.com.

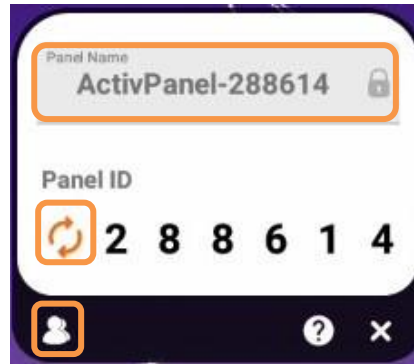


To begin connecting devices, access your **Unified Menu**, then tap **Screen Share**.

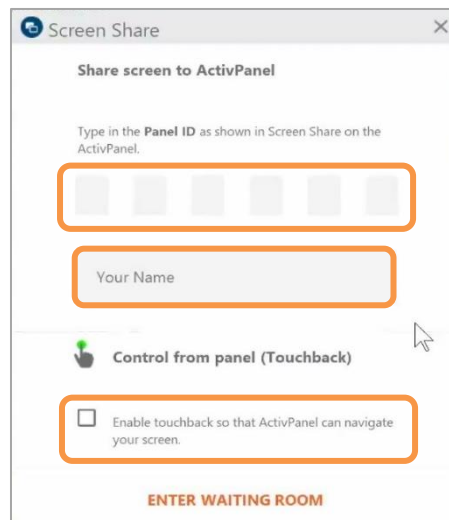


Promethean®

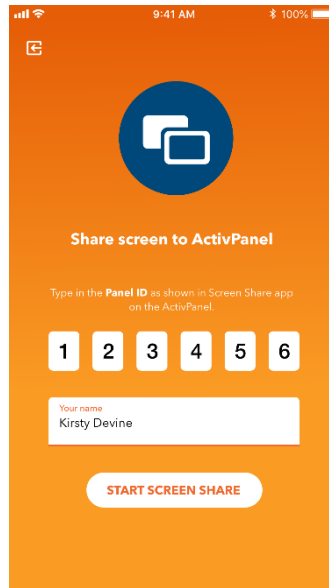
A floating window appears. You may move this anywhere on your screen. You may **name** your panel, tap the **reset** button to generate a new 6-digit panel ID, or tap the **people** icon to enter the waiting room.



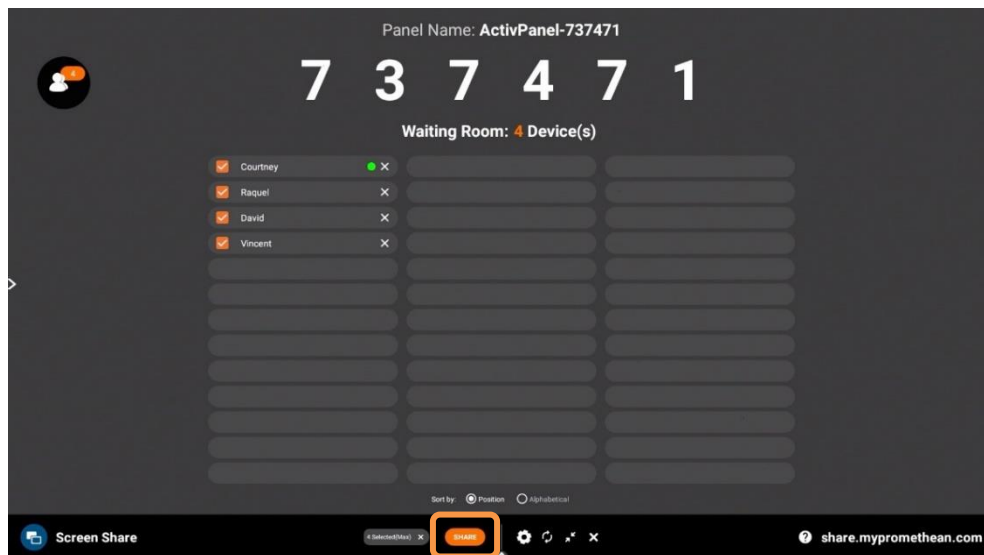
To connect from a computer with the Share Screen Sender, enter the **panel ID**. Next, enter your **name**, and be sure to **enable touchback**. Then select **Enter Waiting Room**.



Students will enter the **panel ID** and their **name** within the Chrome extension or the mobile app. Then select **Start Screen Share**.



Connected devices will display within the Waiting Room. Tap a student's name to share a single screen or select up to four students to share simultaneously. Once you have selected their names, tap the orange **Share** button at the bottom of the waiting room window.



Follow us on Twitter [@LearnPromethean](#), subscribe to our [Promethean Video](#) YouTube channel, [sign up](#) to hear from us, and [visit our website](#) to learn more.

